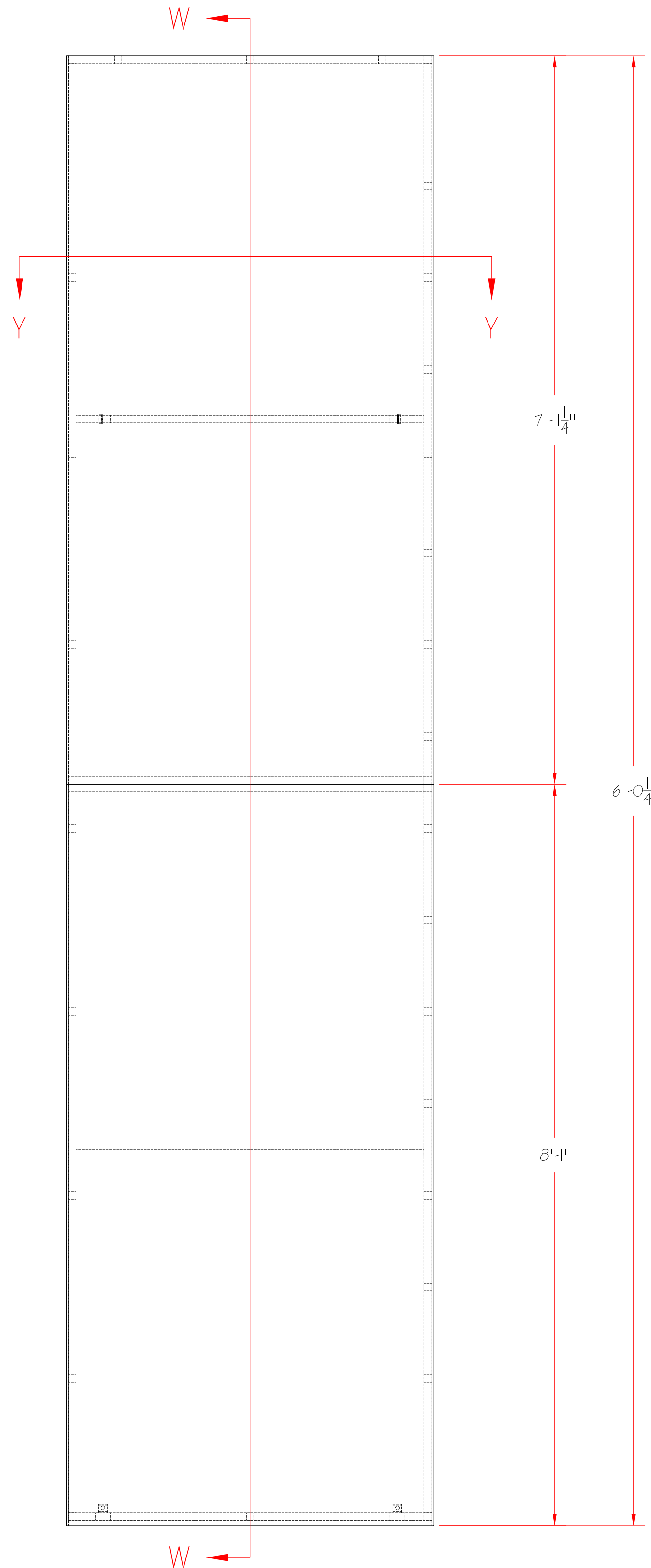
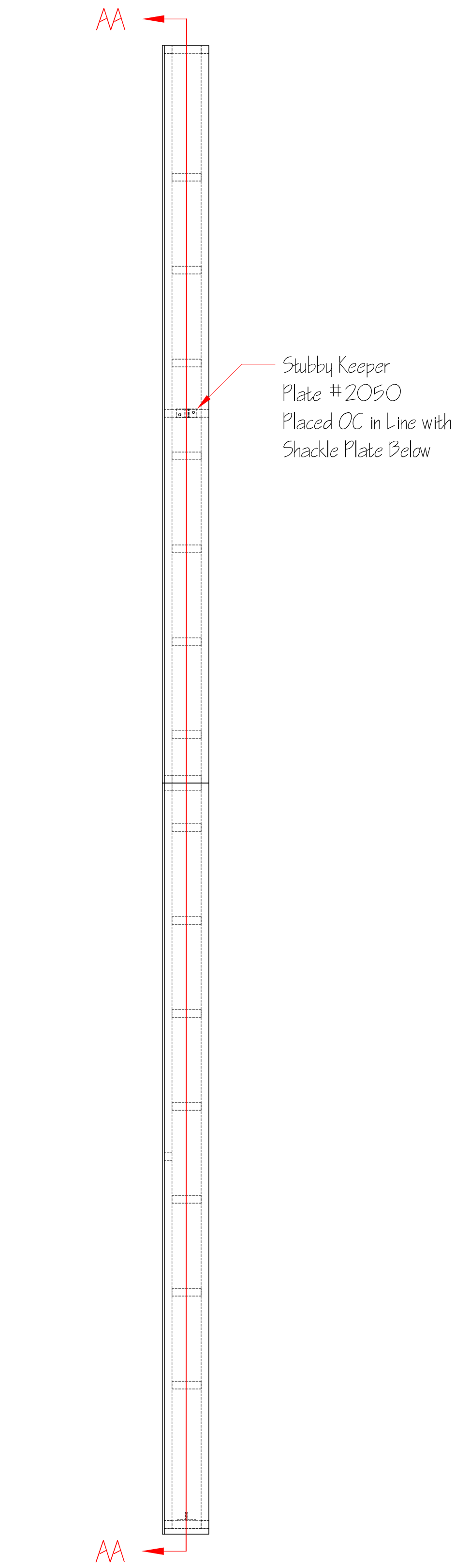


Top View

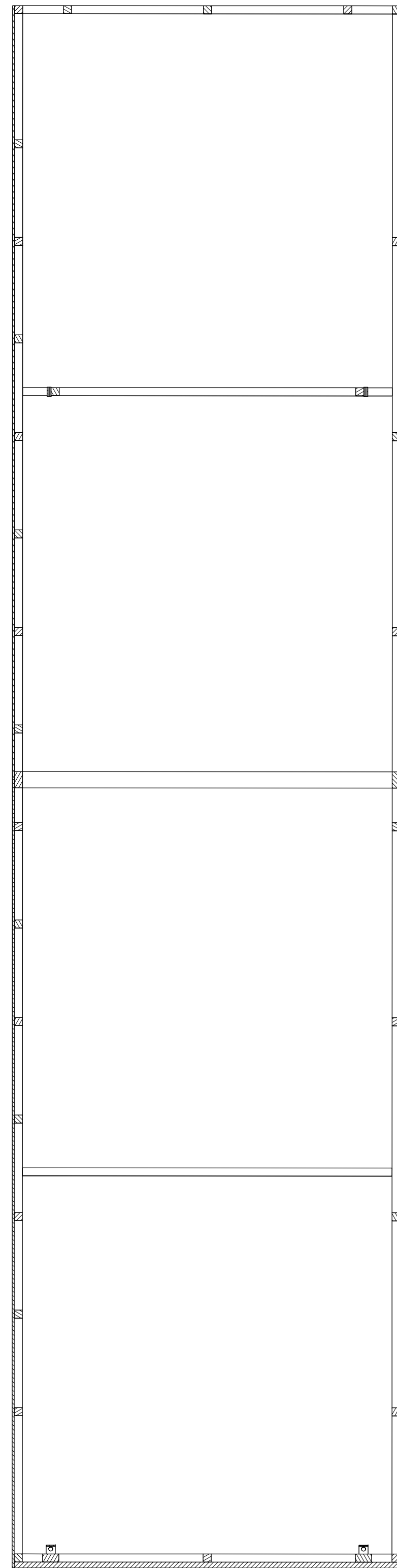


Front View

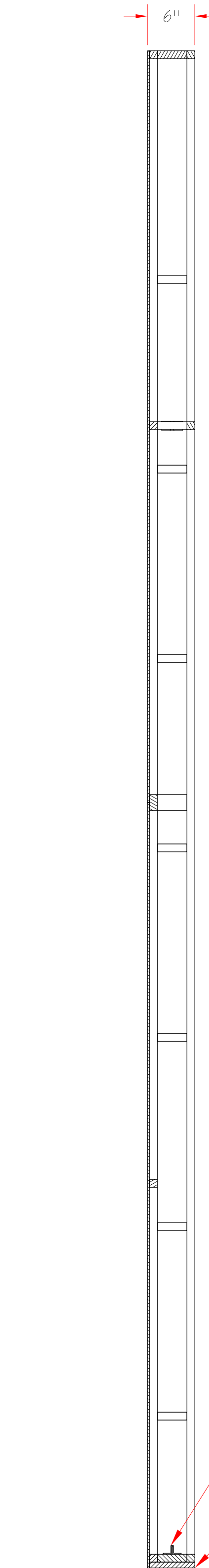


Side View

Stubby Keeper Plate #2050 Placed OC in Line with Shackle Plate Below



Section AA-AA

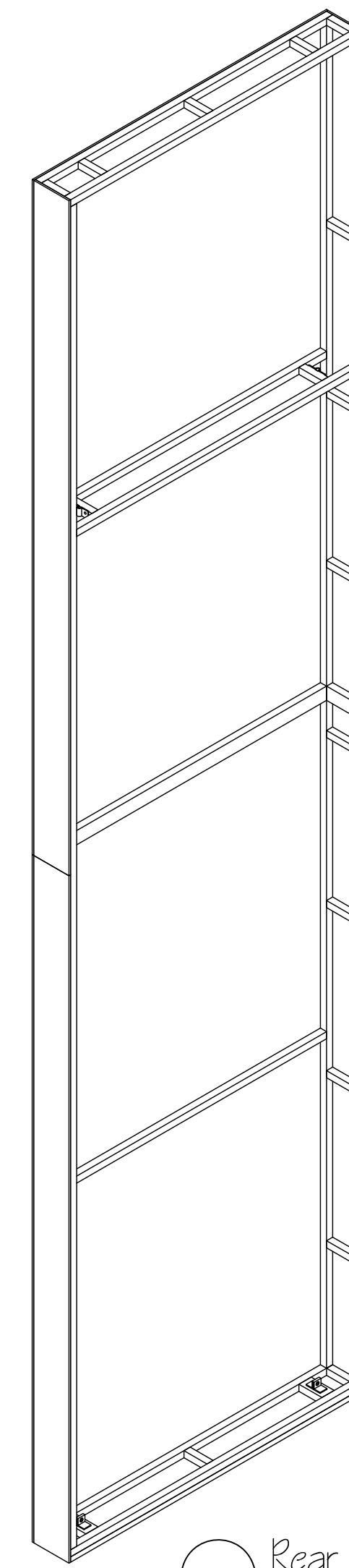


Section W-W

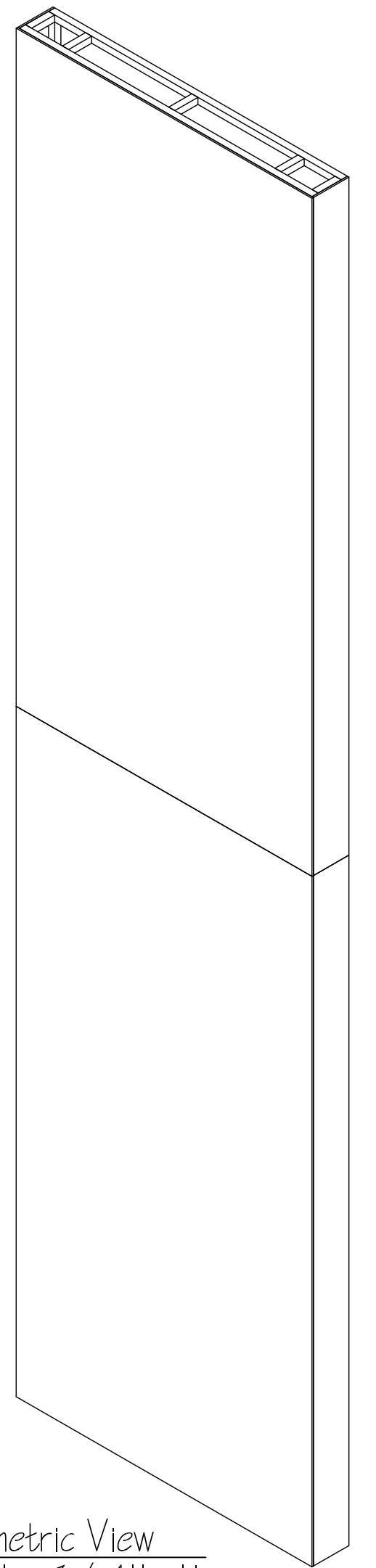
Note: Stubby Shackle Plate #2060 Centered on 1x2 TYP  
 3/4" AC Plywood Plate

Notes:

- Reverse for SL portal legs
- Before facing attach 3/4" AC plywood plate to bottom of portal legs using flat head self tapping screws every 6" or less.
- Face frames with 1/4" MDF using countersunk flat head self tapping screws. No glue
- Facing screws should be placed at least every 1'. Add more as necessary
- Facing covers front, onstage sides, and offstage sides of frames with fronts capping bottoms and offstage side
- Attach shackle plates to bottom 1x2 rails through plywood using 1/4" rated flat head machine bolts, washers, and nutlocks.
- Attach keeper plates in line with shackle plates using 1/4" rated hex head bolts, washers, and nutlocks.
- All fasteners used must be aluminum, stainless steel, or zinc coated steel to prevent galvanic corrosion



Rear Isometric View Scale: 3/4" = 1'



Isometric View Scale: 3/4" = 1'

Ohio Light Opera	
Portal System Facing Layouts	
SR Leg Facing and Hardware	
Drafted By: Samantha Miller	PF 5
Plot Date: 4/29/15 Scale: 1" = 1'	